



Leica Firewire Driver

Release Notes V 1.34.1



Leica Firewire Driver

Release Notes V1.34.1

Abstract

This document describes the V1.34.1 release of the Leica Firewire Driver for Windows systems. You should read this document before installing your copy of this software.

The Leica FireWire Driver is a replacement for the default Microsoft Windows Firewire driver for OHCI 1394 Host Controllers. It fixes some potential instability in the Microsoft driver resulting in the loss of camera live image or connection.

This installer installs a Firewire driver application which gives you the option to install the Leica driver, or revert to the Microsoft driver, and switch between the two. You can apply it to one or more controllers or cards you may have installed in your computer.

All reasonable steps have been taken to ensure that this publication is correct and complete, but should any user be in doubt about any detail, clarification may be sought from Leica Microsystems (Switzerland) Ltd, or their accredited representative. The information in this document is subject to change without notice and should not be construed as a commitment by Leica Microsystems (Switzerland) Ltd. Leica Microsystems (Switzerland) Ltd accepts no responsibility for any errors that may appear in this document.

© Leica Microsystems (Switzerland) Ltd, 2011.

All rights reserved. The contents of this publication may not be reproduced in any form, or communicated to a third party without prior written permission of Leica Microsystems (Switzerland) Ltd.

Due to a policy of continuous development, we reserve the right to change specifications without notice.

Microsoft and Windows are trademarks of the Microsoft Corporation.
Apple, Mac, Macintosh and Firewire are trademarks of Apple Computer Inc.

Date: October 2011
Issue: 3

Table of Contents

1	Introduction	4
2	Installation Notes	4
	. Installation.....	4
	. Un-installation.....	4
3	Reason for this Release	4
4	System Requirements	4
5	Changes in This Release	5
5.1	Features in V 1.34.1	5
6	Changes in Previous Releases	5
6.1	Features in V 1.34.0	5
6.2	Features in V 1.20.0	5
7	Using this software	6

1 Introduction

The version included on this software is v1.34.1.

This release supports cards and onboard Firewire controllers for Leica DFC and DFC500 cameras in Windows.

Please identify the type of camera that you are using before installing the software from this release.

If in doubt, check for the software specific to your camera at the Leica Microsystems website, www.leica-microsystems.com

Uninstall any previous version before installing a new version.

2 Installation Notes

Installation

Run 13940HCIsetup.exe and follow the instructions.

Un-installation

You can uninstall the Leica FireWire Driver by running Start>(All)Programs>Leica Digital Cameras>Uninstall Leica FireWire Driver.

3 Reason for this Release

This version releases new functionality and maintenance that has taken place since the release of version V1.34.0.

4 System Requirements

Supported Operating Systems

Windows 7 Professional or Ultimate - 32 or 64 bit

Windows Vista Business with Service Pack 2 - 32 bit only

Windows XP Professional Edition with Service Pack 3 - 32bit only

Please use the latest Service Packs

Please Note:

You will need Power User or Administrative rights for installation.

5 Changes in This Release

5.1 Features in V 1.34.1

Support for silent installation.

Power Save modes: Some Intel i-processors power saving options caused some corrupt live image and capture errors in Vista and Windows 7. This is fixed by introduction of a new option "High Performance with C-States disabled" in Windows Power Options.

6 Changes in Previous Releases

6.1 Features in V 1.34.0

Support for Windows 7.

Support for Leica DFC500 cameras.

6.2 Features in V 1.20.0

First Version for Windows XP and Windows Vista, supporting Leica DFC cameras.

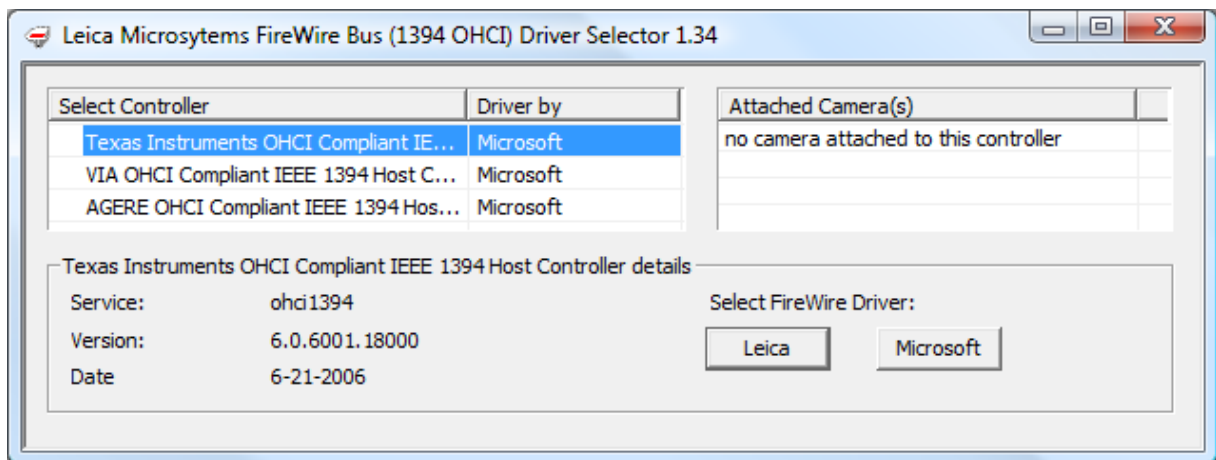
7 Using this software

Open the selector application by opening Start>(All)Programs>Leica Digital Cameras>Select Leica FireWire driver. You can choose to install the Leica driver or retain the default Microsoft driver.

You may have one camera connected to one controller, or you may have multiple cameras connected to multiple controllers. Select each controller to see which camera (or cameras) is currently connected to that controller. If you have more than one controller, you can select which controller to update. If you wish to update all the controllers you have to select each one separately and choose the driver.

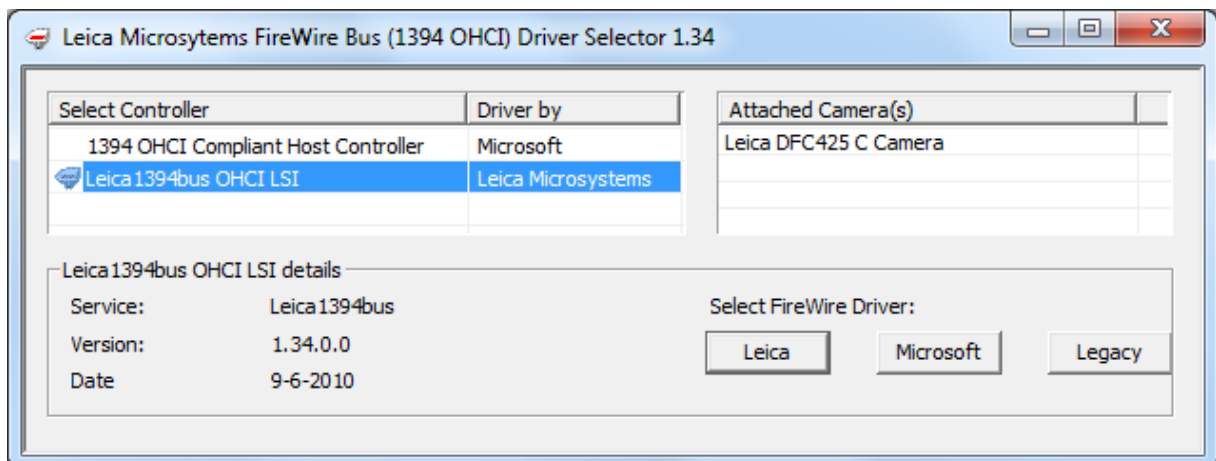
(You can select a Leica driver for one controller and leave the Microsoft driver for another controller.)

A camera does not need to be connected in order to update the controller driver. You can switch between the drivers for each controller at any time, but make sure it is not being used by any running programs.



Click inside the controller list to refresh the displayed controllers and cameras (especially if what you have connected does not appear in the lists).

For Windows 7 systems, there is an additional option to choose to a Microsoft Legacy driver.



Please note: If you have a FireWire hard drive connected to the controller, or a FireWire video (or Leica) camera playing or recording, disconnect it before updating the driver, as you may lose data.

Leica Microsystems (Switzerland) Ltd
Stereo and Macroscopy Systems
CH 9435 Heerbrugg
Switzerland

Hotline: +44 1223 401824
Fax: +44 1223 210692
di.support@leica-microsystems.com
www.leica-microsystems.com

