

# Firmware Update for Leica DFC500



## About this firmware Update

This firmware update should be installed on all Leica DFC500 cameras produced by Leica after March 2008. The update is not necessary on cameras produced before this time.

The firmware update fixes problems when capturing images at long exposures.

## Updating the firmware automatically using the installer

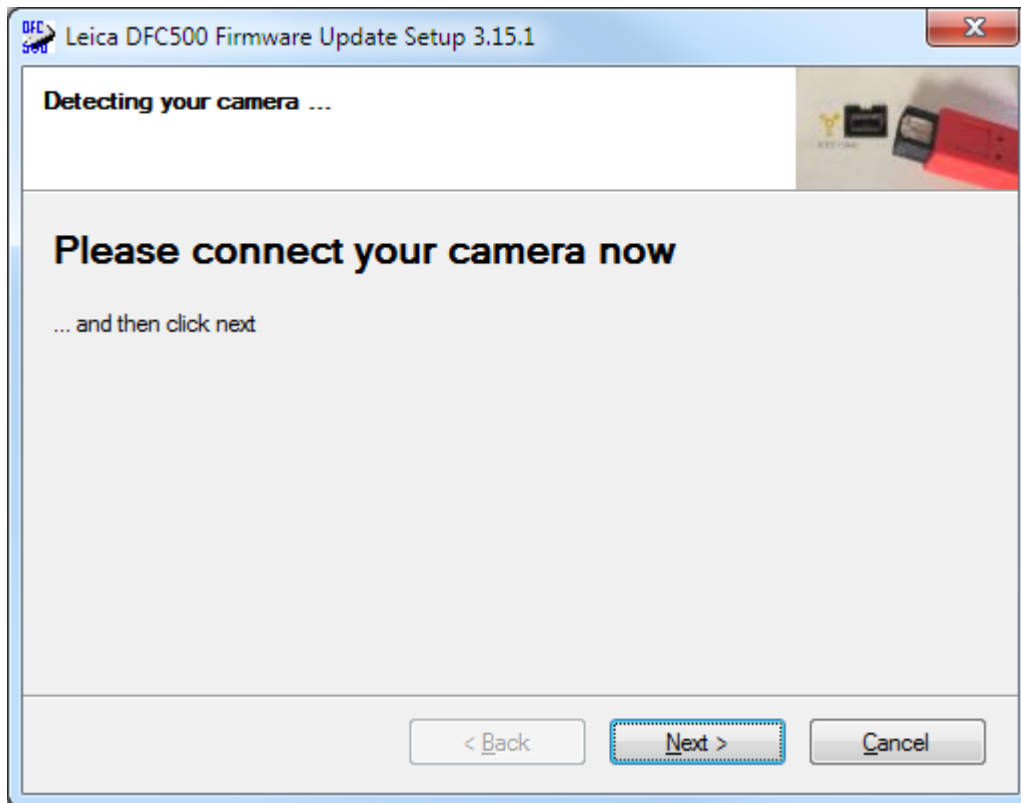
The installer will setup your camera system and guide you through the steps so you can update the camera firmware.



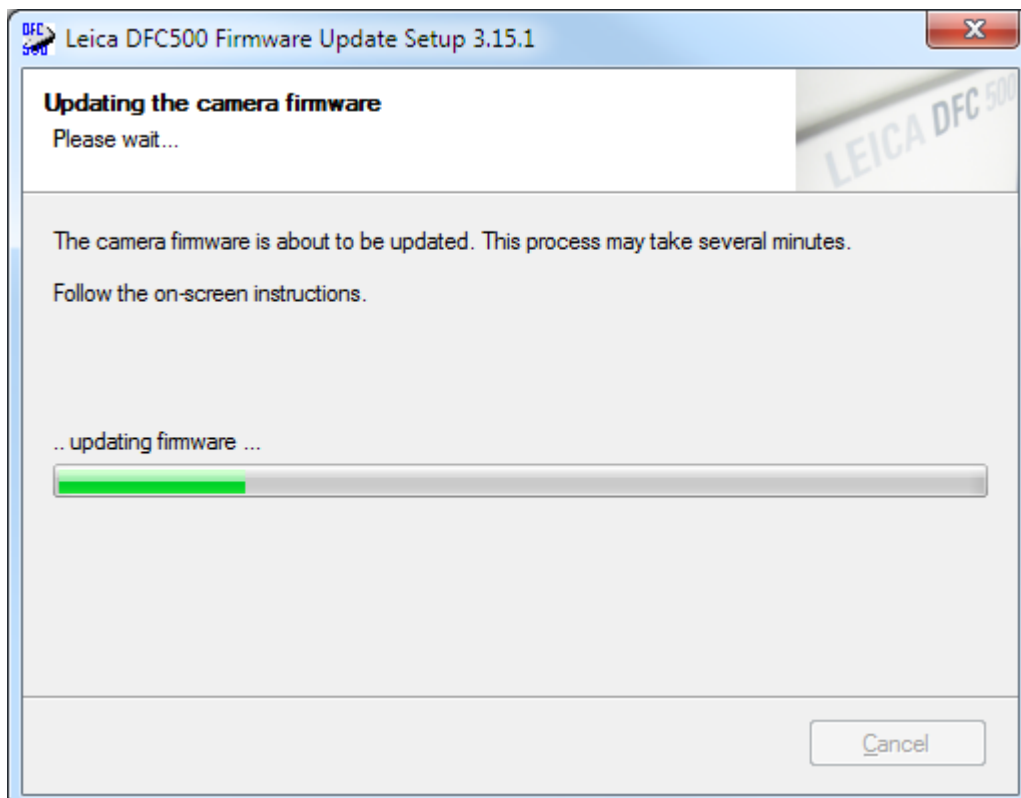
Click *Next*.

Agree to the software license agreement and click *Next* again.

Some drivers will be installed and you will be asked to connect your camera.

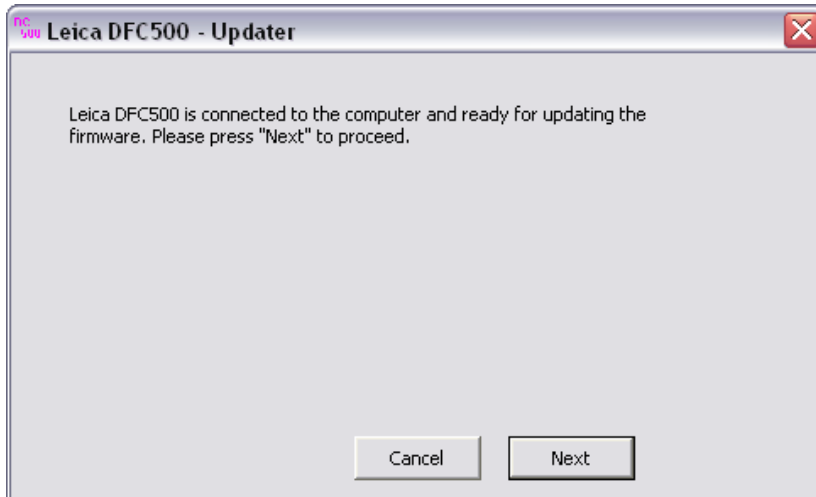


Connect your camera and click *Next* to activate some drivers.



The firmware update will now start.

Make sure your camera is connected securely. Do not interrupt the process once the updating process has started. Update only one camera at a time and disconnect all other cameras. Follow the on-screen instructions.

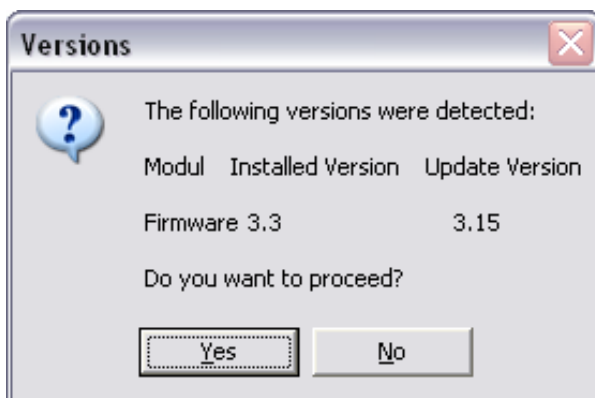


1. Click *Next* to proceed, or *Cancel* to quit without making any changes.

The current firmware version in your camera will be displayed under “*Installed Version*”.

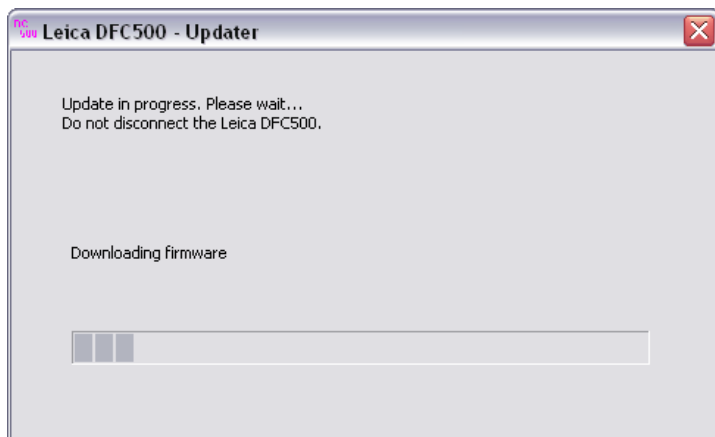
This tool will update your camera firmware to the version under “*Update Version*”.

You can use this screen to see what the firmware version is in your camera, without making any changes to your camera.

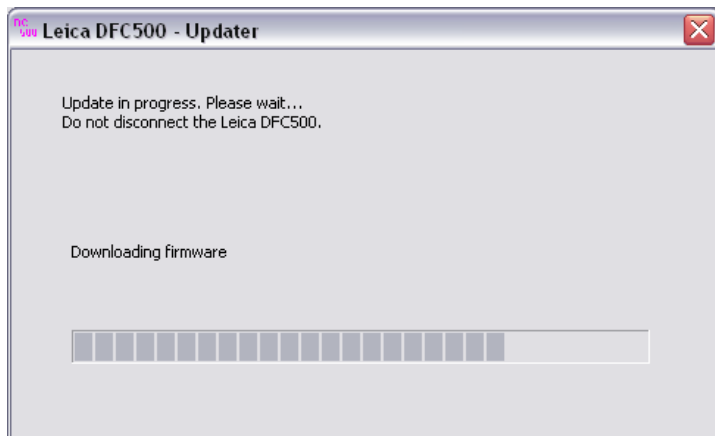


2. Click *Yes* to proceed if you are sure you want to update the firmware. Click *No* to cancel. In this case no changes will be applied to your camera.

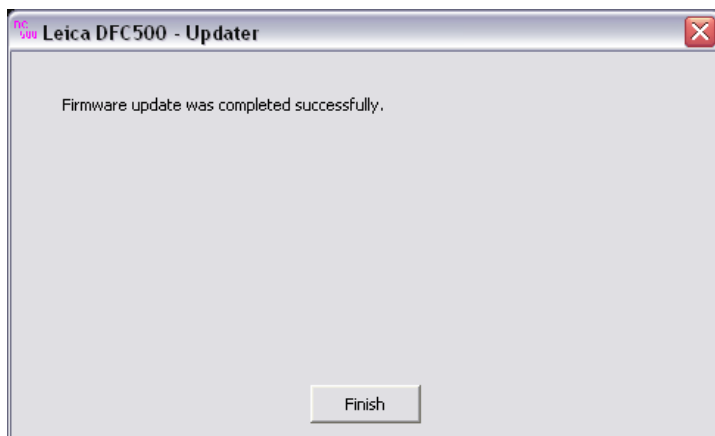
3. After clicking Yes, the updating process will start and you can follow its progress.



4. The whole process will take at least 60 seconds. Do not interrupt the process or disconnect the camera.



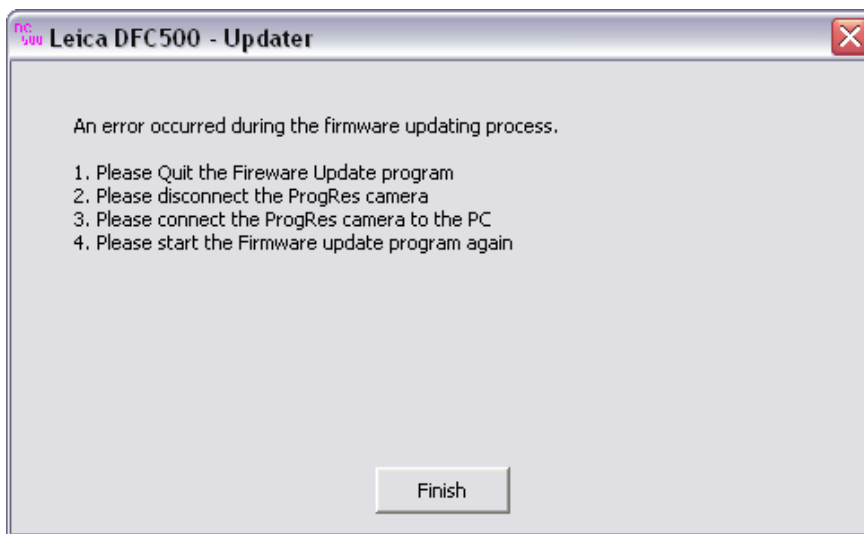
5. If the process has been successful you should see a completed screen



Wait until the *Finished* button is active before using or disconnecting the camera.

You can run the updater again to see the firmware version which is now active in the "*Installed Version*" above (see *Updating the firmware manually using the updater tool* below).

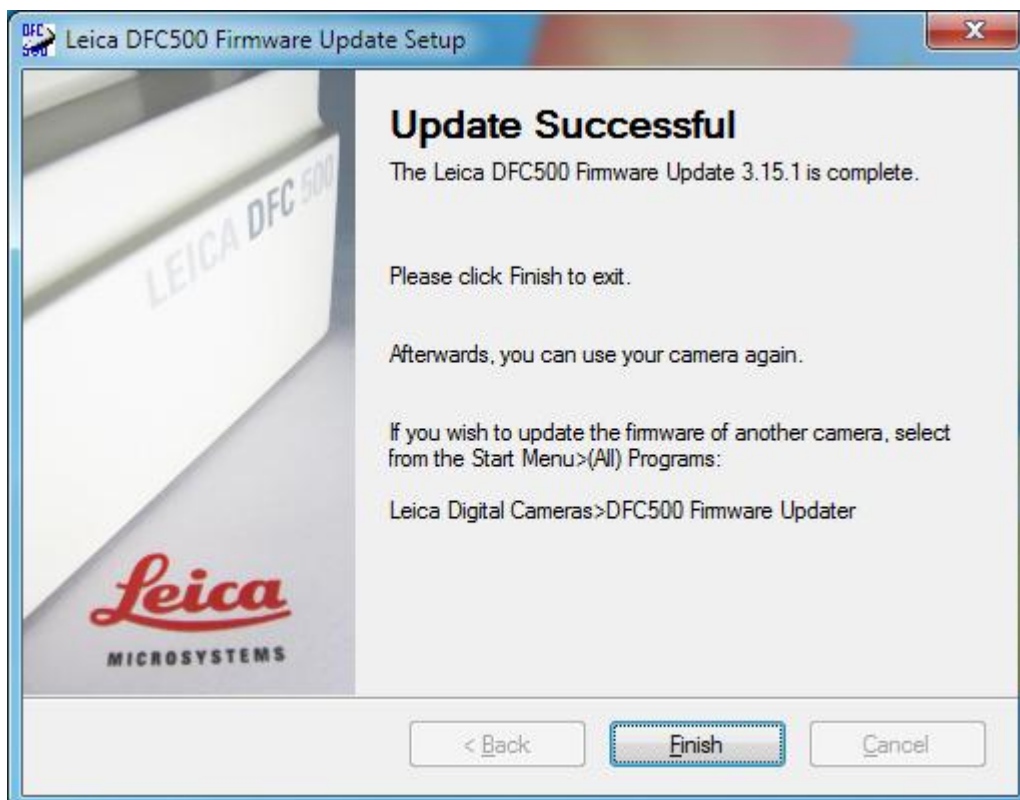
6. If, for some reason, the updating process fails you will see this screen:



Wait until the *Finished* button is active before disconnecting the camera.

This may take 1 or 2 minutes.

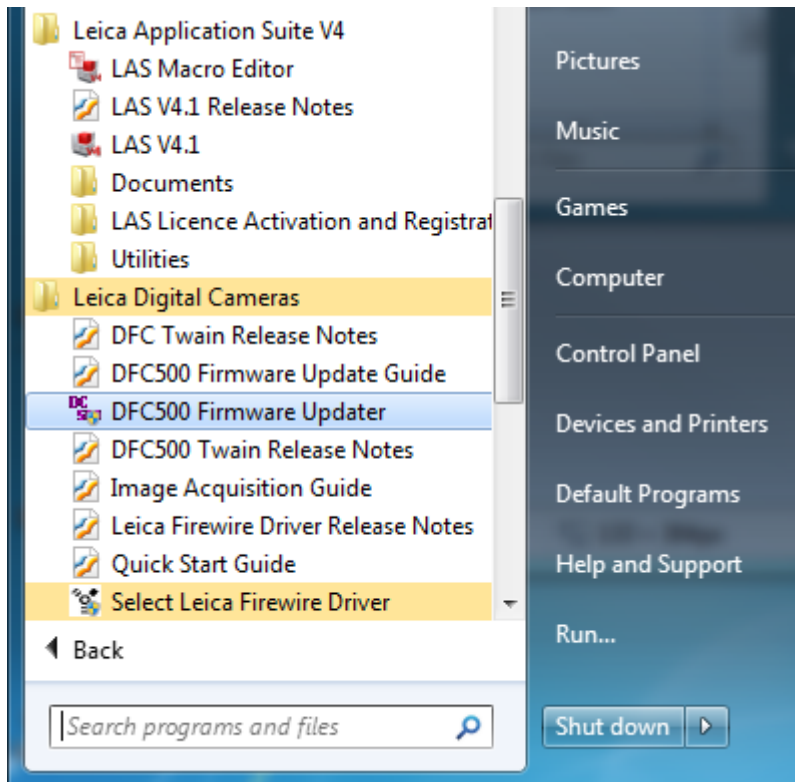
Reconnect the camera, check all camera connections and run the updater again (see *Updating the firmware manually using the updater tool* below).



The firmware update has now completed. Click Finish to close the installer.

## Updating the firmware manually using the updater tool

If you wish to update another camera or need to run the installer again, open the Windows Start Menu> All Programs. Expand Leica Digital Cameras, and click on *DFC500 Firmware Updater*.



This will start the Updater Tool. Repeat the instructions from 1) above.