

July
2006

Leica Laser Microdissection
Application Note



reSOLUTION

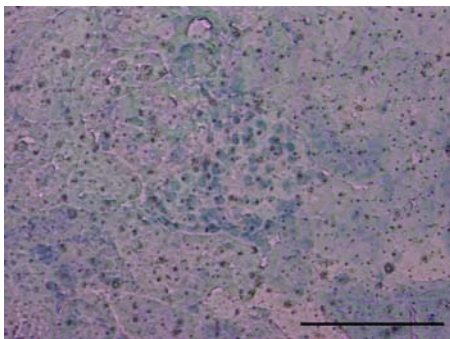
Gene Expression
Analysis in Rat Kidney

Gene Expression Analysis in Rat Kidney

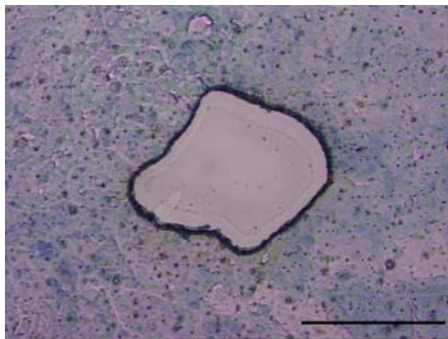
RNA extraction and RT-PCR from rat kidney glomeruli.

Procedure:

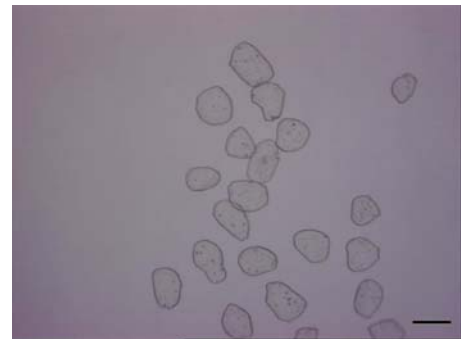
Flash frozen rat kidney was cut into 5 μm sections followed by Toluidine Blue staining. 9.18 μg (mean. max 14.1 μg) of total RNA was extracted from 100 pieces of glomerulus (6,000~7,000 cells) and directed to RT-PCR.



Before microdissection



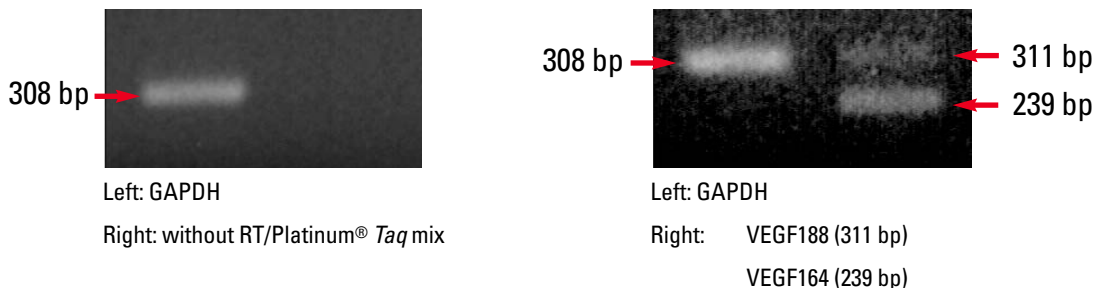
After microdissection



Inspection mode in PCR tube cap

Bar = 100 μm

GAPDH and VEGF were amplified from purified total RNA using SuperScript™ One-Step RT-PCR with Platinum® *Taq* System (Invitrogen).



Acknowledgements: We would like to thank Dr. Kinji Daita, Dr. Kaoru Inoue from Azabu University Bio Science Research Center, Japan for providing images and results.