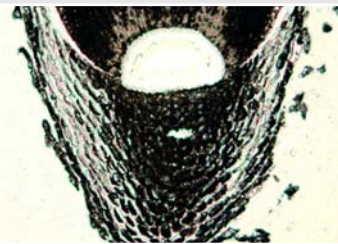


Laser Microdissection of different maize root regions using 20x objective.

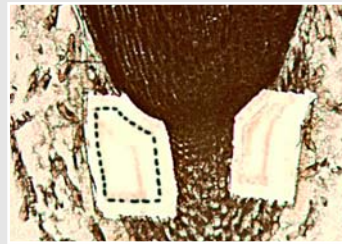
Quiescent Center



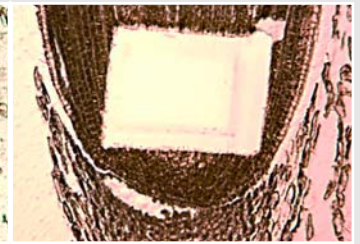
Columella



Lateral Root Cap

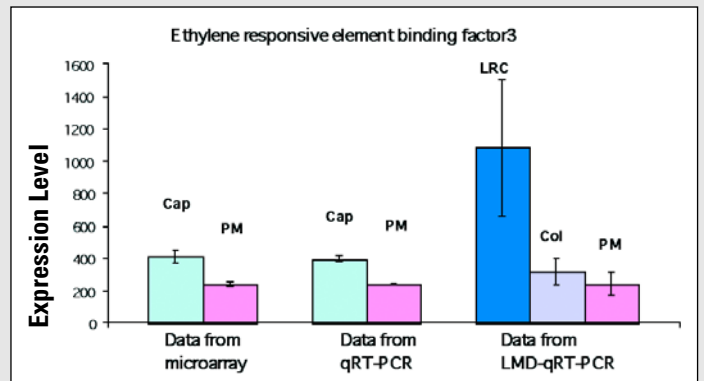
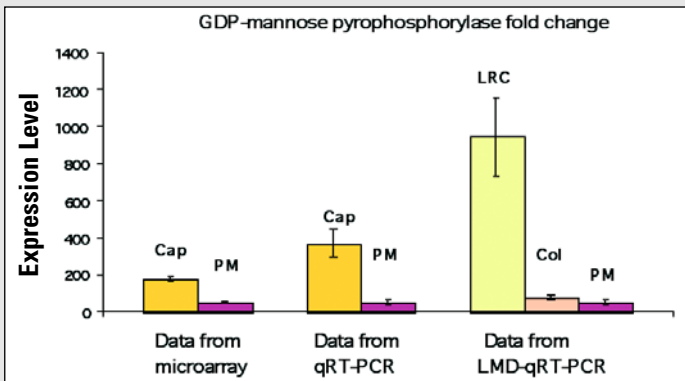


Proximal Meristem



Microdissected specimens were subjected to quantitative real-time PCR. The results of gene expression levels were compared to results obtained by conventional microarray and quantitative real-time PCR experiments.

Data Comparison, Plant Microdissection



Acknowledgements: We would like to thank Dr. Lewis Feldman from University of California, Berkeley, CA, USA for providing images and results.