

Unique 3D acquisition, Angiogenesis Endothelial Cell Tube Formation Assay
 Courtesy of Min Wu, BD Biosciences.
 Raw z-series images acquired.

Simple acquisition set up

1. Load an acquisition protocol
2. Choose appropriate settings

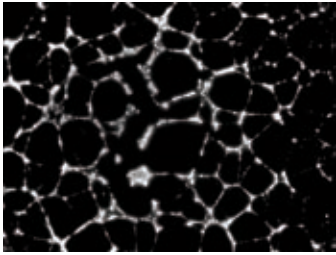
Easy configuration for analysis

1. Select the image of interest
2. Specify a range of tube widths
3. Select the contrast level

Multi-parameter analysis

Measurement options include:

- Total tube length
- Total tube area
- Mean tube thickness
- Number of segments
- Number of branch points
- Number of nodes
- Total area of nodes
- Mean node area



Best focus algorithm
 Calculate best focus image.

Customization through journaling

Journals are sophisticated and powerful macros that record and perform a series of tasks without the need for a programming language. The Angiogenesis module can be incorporated into a Leica MM AF journal to increase the customization and automation of your analysis

Powerful data export capabilities

All measurements can be directly exported to a text file or Microsoft® Excel® for further analysis.

“MetaMorph® is a Registered Trademark of MDS Analytical Technologies”

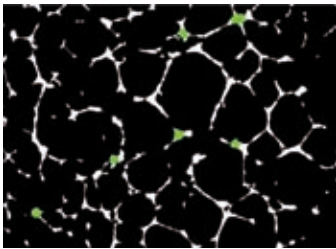
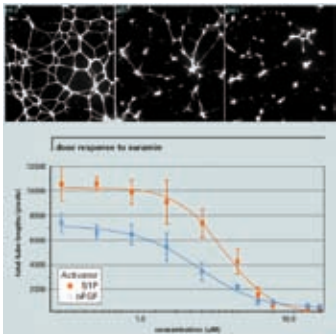


image analysis
 Best focus image is analyzed. White: tubes, green: nodes.



Data export for further analysis