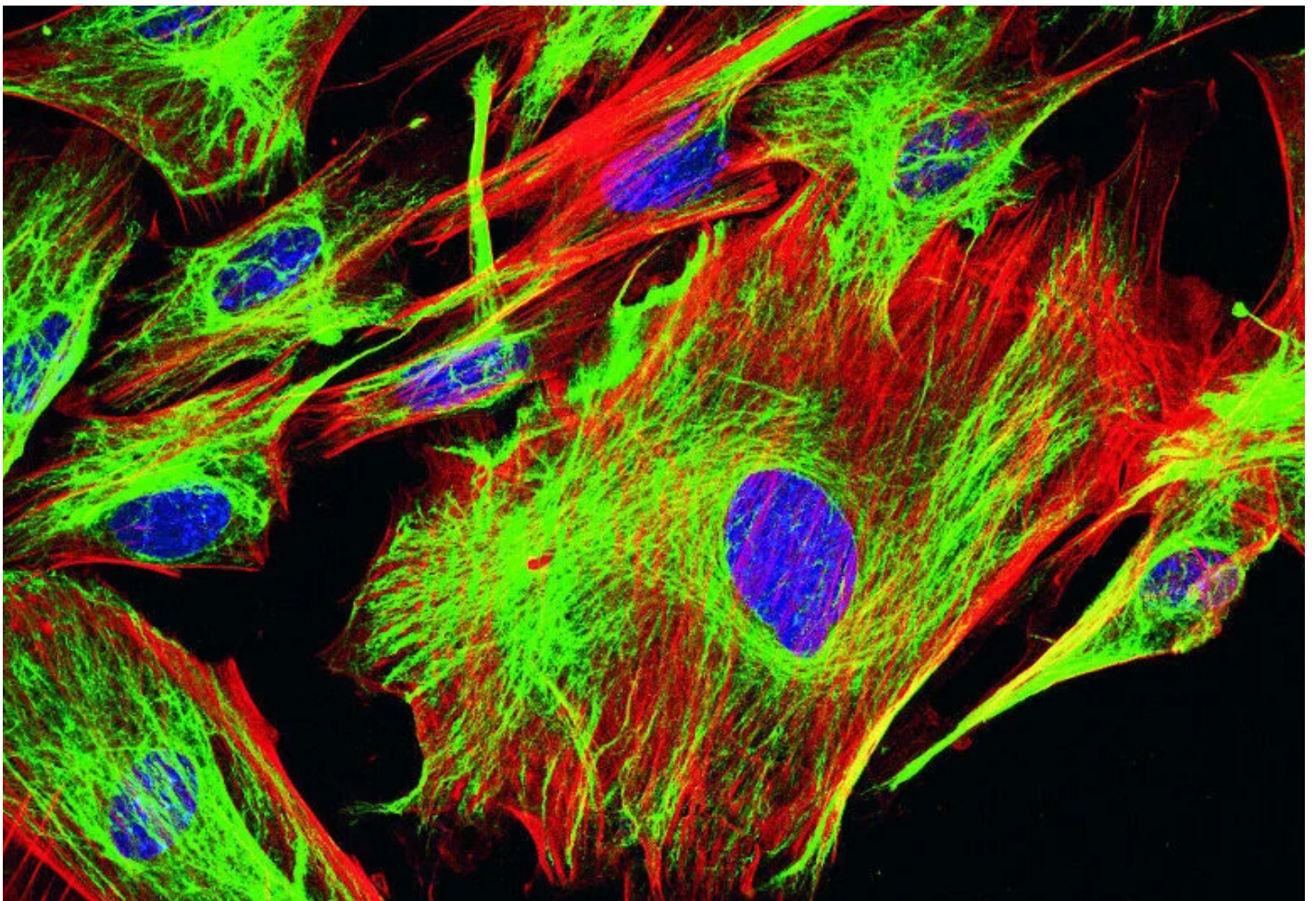


From Eye to Insight

Leica
MICROSYSTEMS

FLUORESCENT DYES AND THEIR EXCITATION AND EMISSION WAVELENGTH PEAKS



Authors

Christoph Greb , Dr.¹
Leica Microsystems

Sample Fluorescent Dyes	Excitation	Emission
Indo-1, Ca saturated	331 nm	404 nm
Indo-1 Ca ²⁺	346 nm	404 nm
CASCADE BLUE BSA PH 7.0	401 nm	419 nm
CASCADE BLUE	398 nm	420 nm
LYSOTRACKER BLUE	373 nm	421 nm
ALEXA 405	401 nm	421 nm
LYSOSENSOR BLUE PH 5.0	374 nm	424 nm
LYSOSENSOR BLUE	374 nm	424 nm
DYLIGHT 405	399 nm	434 nm
DYLIGHT 350	332 nm	435 nm
BFP (BLUE FLUORESCENT PROTEIN)	380 nm	439 nm
ALEXA 350	343 nm	441 nm
7-Amino-4-methylcoumarin pH 7.0	346 nm	442 nm
Amino Coumarin	345 nm	442 nm
AMCA conjugate	347 nm	444 nm
Coumarin	360 nm	447 nm
7-Hydroxy-4-methylcoumarin	360 nm	447 nm
7-Hydroxy-4-methylcoumarin pH 9.0	361 nm	448 nm
6,8-Difluoro-7-hydroxy-4-methylcoumarin pH 9.0	358 nm	450 nm
Hoechst 33342	352 nm	455 nm
Pacific Blue	404 nm	455 nm
Hoechst 33258	352 nm	455 nm
Hoechst 33258-DNA	352 nm	455 nm
Pacific Blue antibody conjugate pH 8.0	404 nm	455 nm
PO-PRO-1	434 nm	457 nm
PO-PRO-1-DNA	435 nm	457 nm
POPO-1	433 nm	457 nm
POPO-1-DNA	433 nm	458 nm
DAPI-DNA	359 nm	461 nm
DAPI	358 nm	463 nm
Marina Blue	362 nm	464 nm
SYTOX Blue-DNA	445 nm	470 nm
CFP (Cyan Fluorescent Protein)	434 nm	474 nm
eCFP (Enhanced Cyan Fluorescent Protein)	437 nm	476 nm
1-Anilino-naphthalene-8-sulfonic acid (1,8-ANS)	375 nm	479 nm
Indo-1, Ca free	346 nm	479 nm

Sample Fluorescent Dyes	Excitation	Emission
1,8-ANS (1-Anilino-naphthalene-8-sulfonic acid)	375 nm	480 nm
BO-PRO-1-DNA	462 nm	482 nm
BOPRO-1	462 nm	482 nm
BOBO-1-DNA	461 nm	484 nm
SYTO 45-DNA	451 nm	486 nm
evoglow-Pp1	448 nm	495 nm
evoglow-Bs1	448 nm	496 nm
evoglow-Bs2	448 nm	496 nm
Auramine O	431 nm	501 nm
DiO	487 nm	501 nm
LysoSensor Green pH 5.0	447 nm	502 nm
Cy 2	489 nm	503 nm
LysoSensor Green	447 nm	504 nm
Fura-2, high Ca	336 nm	504 nm
Fura-2 Ca ²⁺ sup>	336 nm	505 nm
SYTO 13-DNA	488 nm	506 nm
YO-PRO-1-DNA	491 nm	507 nm
YOYO-1-DNA	491 nm	509 nm
eGFP (Enhanced Green Fluorescent Protein)	488 nm	509 nm
LysoTracker Green	503 nm	509 nm
GFP (S65T)	489 nm	509 nm
BODIPY FL, MeOH	502 nm	511 nm
Sapphire	396 nm	511 nm
BODIPY FL conjugate	503 nm	512 nm
MitoTracker Green	490 nm	512 nm
MitoTracker Green FM, MeOH	490 nm	512 nm
Fluorescein 0.1 M NaOH	493 nm	513 nm
Calcein pH 9.0	494 nm	514 nm
Fluorescein pH 9.0	490 nm	514 nm
Calcein	493 nm	514 nm
Fura-2, no Ca	367 nm	515 nm
Fluo-4	494 nm	516 nm
FDA	495 nm	517 nm
DTAF	495 nm	517 nm
Fluorescein	495 nm	517 nm
Fluorescein antibody conjugate pH 8.0	493 nm	517 nm
CFDA	495 nm	517 nm
FITC	495 nm	517 nm

Sample Fluorescent Dyes	Excitation	Emission
Alexa Fluor 488 hydrazide-water	493 nm	518 nm
DyLight 488	493 nm	518 nm
5-FAM pH 9.0	492 nm	518 nm
FITC antibody conjugate pH 8.0	495 nm	519 nm
Alexa 488	493 nm	520 nm
Rhodamine 110	497 nm	520 nm
Rhodamine 110 pH 7.0	497 nm	520 nm
Acridine Orange	431 nm	520 nm
Alexa Fluor 488 antibody conjugate pH 8.0	499 nm	520 nm
BCECF pH 5.5	485 nm	521 nm
PicoGreendsDNA quantitation reagent	502 nm	522 nm
SYBR Green I	498 nm	522 nm
Rhodamine Green pH 7.0	497 nm	523 nm
CyQUANT GR-DNA	502 nm	523 nm
NeuroTrace 500/525, green fluorescent Nissl stain-RNA	497 nm	524 nm
DansylCadaverine	335 nm	524 nm
Rhodol Green antibody conjugate pH 8.0	499 nm	524 nm
Fluoro-Emerald	495 nm	524 nm
Nissl	497 nm	524 nm
Fluorescein dextran pH 8.0	501 nm	524 nm
Rhodamine Green	497 nm	524 nm
5-(and-6)-Carboxy-2', 7'-dichlorofluorescein pH 9.0	504 nm	525 nm
DansylCadaverine, MeOH	335 nm	526 nm
eYFP (Enhanced Yellow Fluorescent Protein)	514 nm	526 nm
Oregon Green 488	498 nm	526 nm
Oregon Green 488 antibody conjugate pH 8.0	498 nm	526 nm
Fluo-3	506 nm	527 nm
BCECF pH 9.0	501 nm	527 nm
SBFI-Na ⁺	336 nm	527 nm
Fluo-3 Ca ²⁺	506 nm	527 nm
Rhodamine 123, MeOH	507 nm	529 nm
FIAsh	509 nm	529 nm
Calcium Green-1 Ca ²⁺	506 nm	529 nm
Magnesium Green	507 nm	530 nm
DM-NERF pH 4.0	493 nm	530 nm
Calcium Green	506 nm	530 nm
Citrine	515 nm	530 nm
LysoSensor Yellow pH 9.0	335 nm	530 nm

Sample Fluorescent Dyes	Excitation	Emission
TO-PRO-1-DNA	515 nm	531 nm
Magnesium Green Mg ²⁺	507 nm	531 nm
Sodium Green Na ⁺	507 nm	531 nm
TOTO-1-DNA	514 nm	531 nm
Oregon Green 514	512 nm	532 nm
Oregon Green 514 antibody conjugate pH 8.0	513 nm	533 nm
NBD-X	466 nm	534 nm
DM-NERF pH 7.0	509 nm	537 nm
NBD-X, MeOH	467 nm	538 nm
CI-NERF pH 6.0	513 nm	538 nm
Alexa 430	431 nm	540 nm
Alexa Fluor 430 antibody conjugate pH 7.2	431 nm	540 nm
CI-NERF pH 2.5	504 nm	541 nm
Lucifer Yellow, CH	428 nm	542 nm
LysoSensor Yellow pH 3.0	389 nm	542 nm
6-TET, SE pH 9.0	521 nm	542 nm
Eosin antibody conjugate pH 8.0	525 nm	546 nm
Eosin	524 nm	546 nm
6-Carboxyrhodamine 6G pH 7.0	526 nm	547 nm
6-Carboxyrhodamine 6G, hydrochloride	525 nm	547 nm
Bodipy R6G SE	528 nm	547 nm
BODIPY R6G, MeOH	528 nm	547 nm
6 JOE	520 nm	548 nm
Cascade Yellow antibody conjugate pH 8.0	399 nm	549 nm
Cascade Yellow	399 nm	549 nm
mBanana	540 nm	553 nm
Alexa Fluor 532 antibody conjugate pH 7.2	528 nm	553 nm
Alexa 532	528 nm	553 nm
Erythrosin-5-isothiocyanate pH 9.0	533 nm	554 nm
6-HEX, SE pH 9.0	534 nm	559 nm
mOrange	548 nm	562 nm
mHoneydew	478 nm	562 nm
Cy 3	549 nm	562 nm
Rhodamine B	543 nm	565 nm
Dil	551 nm	565 nm
5-TAMRA-MeOH	543 nm	567 nm
Alexa 555	553 nm	568 nm
Alexa Fluor 555 antibody conjugate pH 7.2	553 nm	568 nm

Sample Fluorescent Dyes	Excitation	Emission
DyLight 549	555 nm	569 nm
BODIPY TMR-X, SE	544 nm	570 nm
BODIPY TMR-X, MeOH	544 nm	570 nm
PO-PRO-3-DNA	539 nm	571 nm
PO-PRO-3	539 nm	571 nm
Rhodamine	551 nm	573 nm
Bodipy TMR-X conjugate	544 nm	573 nm
POPO-3	533 nm	573 nm
Alexa 546	562 nm	573 nm
BODIPY TMR-X antibody conjugate pH 7.2	544 nm	573 nm
Calcium Orange Ca ²⁺	549 nm	573 nm
TRITC	550 nm	573 nm
Calcium Orange	549 nm	574 nm
Rhodaminephalloidin pH 7.0	558 nm	575 nm
MitoTracker Orange	551 nm	575 nm
MitoTracker Orange, MeOH	551 nm	575 nm
Phycoerythrin	565 nm	575 nm
Magnesium Orange	550 nm	575 nm
R-Phycoerythrin pH 7.5	565 nm	576 nm
5-TAMRA pH 7.0	553 nm	576 nm
5-TAMRA	549 nm	577 nm
Rhod-2	552 nm	577 nm
FM 1-43	472 nm	578 nm
Rhod-2 Ca ²⁺	553 nm	578 nm
Tetramethylrhodamine antibody conjugate pH 8.0	552 nm	578 nm
FM 1-43 lipid	473 nm	579 nm
LOLO-1-DNA	568 nm	580 nm
dTomato	554 nm	581 nm
DsRed	563 nm	581 nm
Dapoxyl (2-aminoethyl) sulfonamide	372 nm	582 nm
Tetramethylrhodamine dextran pH 7.0	555 nm	582 nm
Fluor-Ruby	554 nm	582 nm
Resorufin	571 nm	584 nm
Resorufin pH 9.0	571 nm	584 nm
mTangerine	568 nm	585 nm
LysoTracker Red	578 nm	589 nm
Lissaminerhodamine	572 nm	590 nm
Cy 3.5	578 nm	591 nm

Sample Fluorescent Dyes	Excitation	Emission
Rhodamine Red-X antibody conjugate pH 8.0	573 nm	591 nm
Sulforhodamine 101, EtOH	578 nm	593 nm
JC-1 pH 8.2	593 nm	595 nm
JC-1	592 nm	595 nm
mStrawberry	575 nm	596 nm
MitoTracker Red	578 nm	599 nm
MitoTracker Red, MeOH	578 nm	599 nm
X-Rhod-1 Ca ²⁺	580 nm	602 nm
Alexa Fluor 568 antibody conjugate pH 7.2	579 nm	603 nm
Alexa 568	576 nm	603 nm
5-ROX pH 7.0	578 nm	604 nm
5-ROX (5-Carboxy-X-rhodamine, triethylammonium salt)	578 nm	604 nm
BO-PRO-3-DNA	574 nm	604 nm
BOPRO-3	574 nm	604 nm
BOBO-3-DNA	570 nm	605 nm
Ethidium Bromide	524 nm	605 nm
ReAsH	597 nm	608 nm
Calcium Crimson	589 nm	608 nm
Calcium Crimson Ca ²⁺	590 nm	608 nm
mRFP	585 nm	608 nm
mCherry	587 nm	610 nm
Texas Red-X antibody conjugate pH 7.2	596 nm	613 nm
HcRed	590 nm	614 nm
DyLight 594	592 nm	616 nm
Ethidium homodimer-1-DNA	528 nm	617 nm
Ethidiumhomodimer	528 nm	617 nm
Propidium Iodide	538 nm	617 nm
SYPRO Ruby	467 nm	618 nm
Propidium Iodide-DNA	538 nm	619 nm
Alexa 594	590 nm	619 nm
BODIPY TR-X, SE	588 nm	621 nm
BODIPY TR-X, MeOH	588 nm	621 nm
BODIPY TR-X phalloidin pH 7.0	590 nm	621 nm
Alexa Fluor 610 R-phycoerythrin streptavidin pH 7.2	567 nm	627 nm
YO-PRO-3-DNA	613 nm	629 nm
Di-8 ANEPPS	469 nm	630 nm
Di-8-ANEPPS-lipid	469 nm	631 nm
YOYO-3-DNA	612 nm	631 nm

Sample Fluorescent Dyes	Excitation	Emission
Nile Red-lipid	553 nm	636 nm
Nile Red	559 nm	637 nm
DyLight 633	624 nm	646 nm
mPlum	587 nm	649 nm
TO-PRO-3-DNA	642 nm	657 nm
DDAO pH 9.0	648 nm	657 nm
Fura Red, high Ca	434 nm	659 nm
Allophycocyanin pH 7.5	651 nm	660 nm
APC (allophycocyanin)	650 nm	660 nm
Nile Blue, EtOH	631 nm	660 nm
TOTO-3-DNA	642 nm	661 nm
Cy 5	646 nm	664 nm
BODIPY 650/665-X, MeOH	646 nm	664 nm
Alexa Fluor 647 R-phycoerythrin streptavidin pH 7.2	569 nm	666 nm
DyLight 649	652 nm	668 nm
Alexa Fluor 647 antibody conjugate pH 7.2	653 nm	668 nm
Alexa 647	653 nm	669 nm
Fura Red Ca ²⁺	435 nm	670 nm
Atto 647	644 nm	670 nm
Fura Red, low Ca	472 nm	673 nm
Carboxynaphthofluorescein pH 10.0	600 nm	674 nm
Alexa 660	664 nm	691 nm
Alexa Fluor 660 antibody conjugate pH 7.2	663 nm	691 nm
Cy 5.5	673 nm	692 nm
Alexa Fluor 680 antibody conjugate pH 7.2	679 nm	702 nm
Alexa 680	679 nm	703 nm
DyLight 680	678 nm	706 nm
Alexa Fluor 700 antibody conjugate pH 7.2	696 nm	719 nm
Alexa 700	696 nm	720 nm
FM 4-64, 2% CHAPS	506 nm	751 nm
FM 4-64	508 nm	751 nm



Leica Microsystems CMS GmbH | Ernst-Leitz-Strasse 17–37 | D-35578 Wetzlar (Germany)
Tel. +49 (0) 6441 29-0 | F +49 (0) 6441 29-2599

www.leica-microsystems.com

CONNECT
WITH US!

